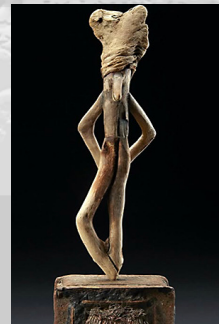
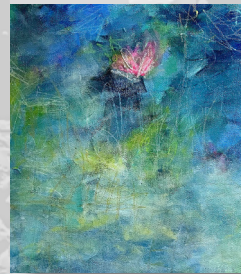
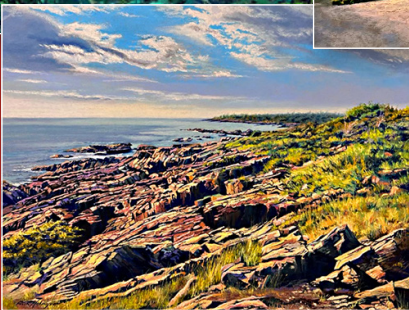
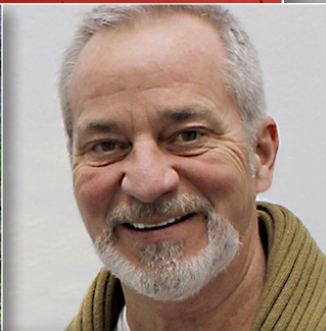


TOGETHER

JUNE 2026





With a background in design and a passion for the arts, Rich has applied his creative vision across both corporate and personal projects. As an artist and former Vice President of Creative Services at Erie Insurance, he managed an in-house ad agency. After retiring, he has dedicated more time to creating beautiful pastel works, drawing on decades of professional experience in visual communication.

Richard Holmgren earned a BFA in illustration and advertising from Columbus College of Art and Design (CCAD). After graduation and a stint as an advertising art director, his new role professionally centered on establishing and evolving Erie Insurance's brand presentation across all touchpoints. Rich played a key role in shaping the company's visual identity and branding. Most notably, he oversaw the adoption of the iconic cupola — a stylized version of the copper dome from Erie Insurance's first Home Office building — as the company's logo since 1992, which became an enduring symbol reflecting both the organization's historical roots and architectural heritage. Beyond the logo, Holmgren's broader creative direction shaped how Erie Insurance presented itself through its facilities and cultural initiatives. He managed the curation of acquired artwork pieces to display throughout its network facilities as part of its visual environment. In doing so, he was key in showcasing numerous talented local artists and craftsman, many of which are NPAA members.

And finally, as the only organization in the region that provides scholarships to deserving high school art majors, Rich was instrumental in helping the NPAA establish an Endowment Fund with the Erie Community Foundation to keep these scholarships going for promising young artists. This endowment will help create greater financial stability and growth and provide a means to increase the value of the scholarships for future artists.



The newest member of our NPAA Board

Deborah Vahanian
will be a
Director/Advisory

*She excels at being a fines arts appraiser
as well as a certified memoirist*

WELCOME Deborah

And a huge **thank you** to the
current members of the Board

Greg Zbach

President and Acting Treasurer
Artist Member Photographer Digital Art



Sarah Hlusko Everhart

Secretary
Friend of NPAA



Bryan Toy

Director/Exhibitions
Artist Member Visual Arts Educator Illustrator/ Cartoonist



Tara Shannon

Director/Scholarships
Artist Member Digital Paintings



Daniel Austin

Director/Memberships
Artist Member Watercolor Paintings



Stacie Keyes

Director/Communications
Friend of NPAA Public School Teacher



Steve Milk

Director/Publicity
Artist Member Painter Public Artist



Marsha Cisek

Director/Advisory
Artist Member Fiber Art Mixed Media



Deborah Vahanian

Director/Advisory
Fine Art Appraiser Certified Memoirist



Robert Martin

Director/Advisory
Artist Member Painter Oil & Acrylic



Bob Otis

Advisory to the Board



James R. Steadman, Esq.

Advisory to the Board





We have the Annual Picnic

We have the Holiday Party

Okay

Why don't we mingle more often ?

You've asked

And we listened

HOT

Open board meeting

June 23rd at the Plymouth Tavern

5 pm

6 pm we'll cut with the business stuff

And unwind where we can order food and drinks and mingle

Best of all the NPAA will foot the bill for the appetizers

Let's do it

Let's party



land sea city
scapes

landscapes seascapes cityscapes

10|20 Collective July-August Opening July 24

Prospectus on following page

Bryan Toy Director /Exhibitions has asked all participants to **please** respond to **this** email address NPAASHOWS@yahoo.com for any concerns or correspondence concerning exhibitions.





Intake

Sunday, July 19 11am - 5pm
Monday, July 20 12 noon - 7pm

1020 Collective

1020 Holland Street, Erie, PA 16501

Opening Reception

Friday, July 24 6pm - 9pm

Contact

Bryan Toy – 814-397-2813
bryantoy@hotmail.com
Greg Zbach – 814-790-9117
gregzb@verizon.net

Commission

Artist 60% - Gallery 40%

Pickup of Artwork

Tuesday, September 8 12 noon - 7pm

NPAA will hold an artist's panel presentation and discussion

Thursday, August 20 6pm - 10pm

Theme

Landscapes, Seascapes, Cityscapes

Work must fit the theme

Subject is outdoors with a layout that expresses a viewpoint that encompasses distance and breadth. Theme can be urban, rural, water or wilderness.

Specifics

The entrance fee for this exhibit is **\$5.00** per entry.

You may enter 2 pieces.

Flat art or sculptures – up to 60" X 60"

Media

All traditional media will be accepted including

Painting–watercolor, oil, acrylic, etc.

Drawing–pastel, ink, graphite, charcoal, etc.

3D–ceramics, metal, wood, etc.

Fiber art–needlework, weaving, knitting, etc.

Printmaking–linocut, etching, lithography

Photography–darkroom or digital

Mixed Media–any combination of the above

Care

Reasonable care will be taken with all submitted work. NPAA will not be responsible for loss, damage, or theft of any work.

Rules and Conditions

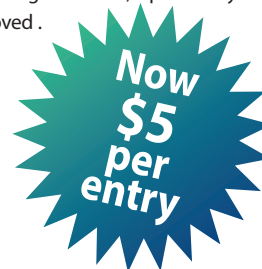
Giclee and other automated methods of printing original digital work are acceptable, but are discouraged for any edition of more than one. Your work must be your own original creation. CGI and AI may be used as tools to manipulate imagery, but the scope and manner in which they are used must be disclosed in a written statement accompanying the work.

Materials must be stable. Any piece that will degrade quickly, omit an odor or attract insects will not be accepted. As always, work must be ready to hang. Framed work should be in a quality frame with a wire. With smaller three-dimensional work, pedestals will be provided.

Please inform us in advance if your work needs any special handling.

Work need not be new, but must not have been shown within 50 miles of Erie at any point in its history.

This is not a juried show. However, the gallery director representing 1020 Collective reserves the right to exclude any piece from the show. In the case of artwork that may be inappropriate for younger viewers, a piece may be covered or removed.





**NPAA
TO PROVIDE
MEATS, BUNS,
SILVERWARE,
ICE, ETC.**

COME AND JOIN US FOR OUR

ANNUAL NPAA SUMMER PICNIC

Saturday, August 15, 2026 | 4:00 pm-sunset

Hosted by Tom Calicchio
410 Rondeau Drive, Erie, PA 16505

Located just 15 minutes from Downtown Erie, this charming multi-acre property—originally a summer Bible camp—offers a unique setting with ample parking. At the heart of the grounds is our "party barn," featuring a patio, outdoor fireplace, grilling area, and restroom. Whether it's sunny or raining, the barn's French doors and large windows ensure you can always enjoy the beautiful views. You'll also find a cabana and an inground pool overlooking the cliffs, with stairs nearby leading down to a scenic beach path.

To enter, please take the driveway exiting the circle to the left, marked by two square white columns and mailboxes to the right. Follow the path and feel free to park on either side of the red barn or on the grass near the house. We kindly ask that you keep the main driveway clear for guest access.

Guests are welcome to enjoy the barn/patio, pool/cabana, restrooms in the barn or guest house, and the beach via the stairs west of the main house. No entry to the main house is permitted.

Wear comfortable shoes and bring a dish to share, labeled chairs, and a cooler with beverages. Don't forget your swimsuit, towel, and sunscreen if you plan to swim (in the lake or pool)!





Greg Zbach
Small Tent Survival



Justin Elliot Poole
Circe



103 Annual
Erie Art Museum Spring Show
Award Winners
Greg Zbach, Justin Elliot Poole
and two others present,
"Pechakucha"

A concise storytelling presentation
format where speakers show 20 slides
for 20 seconds each
June 11, 6:00 pm

PECHAKUCHA



Erie Open Figure Sessions, an informal Erie art group that meets weekly to draw live models has been awarded the Lydia McCain Next Steps Grant from Erie Arts and Culture for \$5000 to purchase professional lighting that can be adjusted for color temperature, brightness, and direction. They are very grateful to the NPAA for sponsoring the grant.

The group meets on Wednesday from 6 until 9pm throughout the year at St Mary's Place to Create on East 10th Street. The cost to help pay for the space and the model is \$20 for a three-hour session. All artists are welcome to join in any time. If you wish to participate, you should contact facilitators Kris Risto, Deb Sementelli, or Bryan Toy (*pictured*) the day of to find out if we are drawing that evening.

The group is always looking for models; any body type, any age, any gender. If you know of anyone who would be interested, contact one of the facilitators.

Also pictured are participants at their recent show at Cummings Gallery at Mercyhurst University. The group includes many members of the NPAA.



Kathe Umlauf has been awarded the National Sculpture Society's 2026 annual Marilyn Newmark Memorial Grant of \$5,000 unrestricted funds for Animal Sculpture. "The recipient has demonstrated an outstanding ability and commitment to animal sculpture."



Kathe was also accepted into "A Founder's Legacy: The Society of Animal Artist's and Brookgreen Gardens", Brookgreen Gardens, Murrells Inlet, South Carolina, May -July

And Kathe's work will be in a group show at West End Gallery, Corning, New York. Opening Reception, July 24 from 5 -7pm



Peggy Quinn has been accepted into America 250: Craft Today, a National Juried Exhibition celebrating the best of American contemporary craft. The exhibition runs from May 11 – July 25. Touchstone Center for Crafts
1049 Wharton Furnace Road
Farmington, PA 15437
peggyquinnclaystudio.com



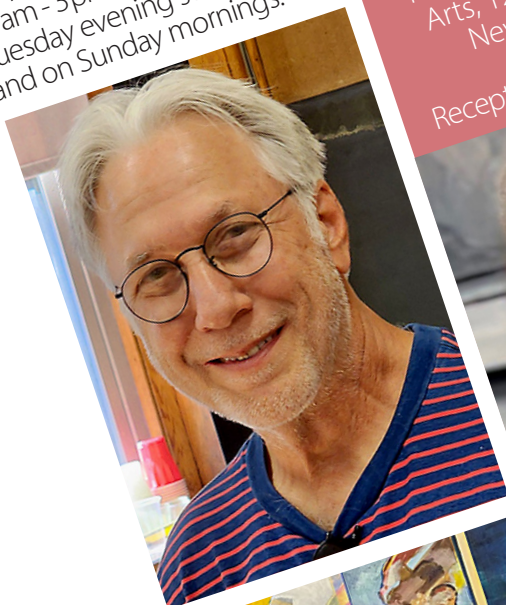
Tara Shannon represented ESD/EAC as a featured artist at the Girard Walk this year on June 5. Even though the event date has passed, we wanted to acknowledge her involvement.



Passel Helminski's painting, *Freedom*, was selected for the FCCA June 2026 "Artist Choice" National All-Media Juried Exhibit in the Frederick Gallery at the Frederickicksburg Center for the Creative Arts (FCCA). The exhibition runs from May 30–June 26



Thomas Ferraro exhibition at the Cathedral of St. Paul as part of their Sacred Pathways program. May 1-June 30. Tom will also be their featured artist for the June 26th "Gallery Night" at the Cathedral. The exhibition is open to the public on weekdays from 10am - 3pm and during Tuesday evening services, and on Sunday mornings.



Kristen Muench is exhibiting at Art That Matters to the Planet: Beyond Beauty at the Roger Tory Peterson Institute, Jamestown, NY. March 28-September 27. Kristen's piece "Turmoil" was also accepted into the 53rd Annual Hoyt Regional Exhibition The Hoyt Institute of Fine Arts, 124 E. Leasure Ave., New Castle, PA 16101. May 28 - July 23, Reception June 20, 12-2pm



Justin Elliott Pool is showing at the Pennwest University Exhibition at Bryce Gallery, The First 50 Years: Celebrating a Half Century of Edinboro's MFA Program. The show runs through October 4th. Justin also recreated the painting "Lauretta" by Jules Joseph Lefebvre. His painting was one of 3 winners at the "Mini Masterpiece" competition at the Arts & Education at the Hoyt Institute, in New Castle, PA.





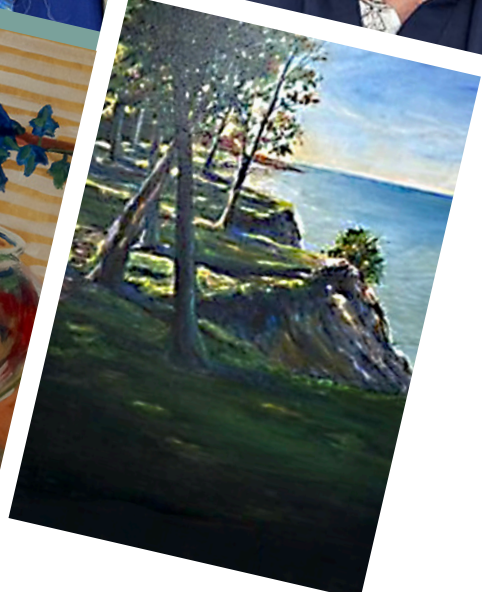
Barbara Crone has a piece titled "Not Dark Yet" in the Butler Institute of American Art's 89th National Midyear Exhibition. Exhibition Dates: July 12 – August 20, 2026. Opening Reception: July 12 from 1-3pm, with an Awards Presentation at 2pm.



Luke Gehring works, "Ceci N'edt Pas One Pipe" and "Who Was Thomas Marcus Martin" are displayed at the 53rd Annual Hoyt Regional Exhibition. The Hoyt Institute of Fine Arts, 124 E. Leasure Ave., New Castle, PA 16101. May 28 – July 23, Reception June 20, 12-2pm. Luke's piece, Marmalade Wine, is also in the City Gallery Art of Aging exhibit.



Mary Hamilton will be the featured artist at Artiques Gallery at 716 Nevada Drive for the month of June with an extensive display of her regional landscapes. This is a must see show that culminates with the new galleries participation in the June 26 Gallery Night.



Rita Duris will exhibit a major body of work "Within Conversations between Women." The exhibition will be at 1020 Collective from June 18-July 18. The opening is Thursday June 18, 6pm. These large scale works honour the contributions of these women to their vibrant artistic community, as well as exploring conversation as a window into human expression and presence.



Edward Allen Macie Glass Growers Gallery presents: "Nature's Breath" paintings Thursday, June 25 Gallery Night Reception: Friday, June 26, 5-10 pm



Gudrun Richter will have a show of her work titled "Grow Roots and Fly" at the Erie Insurance GALERIE from June, 2 - July 17. Her paintings capture the essence of northwestern Pennsylvania landscapes, showcasing the enchanting allure of rolling hills, rustic barns, old homes and the majestic presence of Lake Erie.





2026 UPCOMING SHOWS

1. Landscapes Seascapes Cityscapes 10|20 Collective

July-August Opening July 24 See prospectus page 5

2. Holiday Show & Party City Gallery December Show hung prior to Thanksgiving / Up for Black Friday and Small Business Saturday

MEMBERS ON VIEW To be included in future issues of the Newsletter, send info **along with images of your work** and dates about upcoming shows, exhibits and/or lectures that you'd like everyone to know about to **Stacie Keyes at stacieboca123@gmail.com**

JUST ASKING Is anyone interested in displaying NPAA artists work or demonstrating how to create their art at community festivals and gatherings this summer?

We Love Erie Days, 8 Great Tuesday's — so many events!

Also, possibly members participate in a cement chalk drawing at WLED in August?

If interested, express where, ideas. We would ask you to volunteer some time to help too. I'd set up a table and canopy. We would love your ideas and input. Email stacieboca123@gmail.com.

NPAA BOARD SHOUT-OUT Daniel Austin, Director of Memberships, for his efforts to develop, identify and manage communications between new members and current members. Thanks Dan.